



# Age in Place Showers



## Low Threshold Showers

Approximate prices are subject to Laurel Mountain terms and conditions of sale and may change without notice. 3/01/2019



**LOUDEN**

Drain	Seat	Item#	MSRP
RH	LH	639287	\$1,844
LH	RH	639308	1,844
<u>Multi Piece (3) - 4" Threshold</u>			
60" x 32" x 77" - Handed by SEAT			



**RAMER**

Drain	Seat	Item#	MSRP
RH	LH	639290	\$1,844
LH	RH	639299	1,844
<u>Multi Piece (4) - 4" Threshold</u>			
60" x 31" x 77" - Handed by SEAT			



**ALMEDIA**

Drain	Seat	Item#	MSRP
RH	LH	1295738	\$1,798
LH	RH	1295739	1,798
<u>Multi Piece (4) - 4" Threshold</u>			
60" x 30" x 74" - Handed by SEAT			

### STANDARD FEATURES

**ALL UNITS:** Low threshold, sturdy shower base with textured floor, double reinforced ArmorCore walls, accessory shelves, accommodates shower doors, simple installation from front or rear, easy to clean high gloss premium AcrylX finish, limited lifetime warranty. Made in the **USA**

o **Loudon, Ramer, Almedia, & Coeburn:** Also includes 3 Stainless steel grab bars, chrome plated brass drain & stainless steel curtain rod.



**ATWOOD**

Drain	Seat	Item#	MSRP
RH	LH	639285	\$1,629
LH	RH	639307	1,629
<u>Multi Piece (3) - 4" Threshold</u>			
60" x 32" x 77" - Handed by SEAT			



**SLAYDEN**

Drain	Seat	Item#	MSRP
RH	LH	639291	\$1,629
LH	RH	639309	1,629
<u>Multi Piece (4) - 4" Threshold</u>			
60" x 31" x 77" - Handed by SEAT			



**COEBURN**

Drain	Seat	Item#	MSRP
RH	LH	1295745	\$1,873
LH	RH	1295746	1,873
<u>Multi Piece (4) - 4" Threshold</u>			
60" x 34" x 76" - Handed by SEAT			

# Age in Place - Low Threshold Showers



**SPENCER**

Seat	Item#	MSRP
RH	639312	\$1,844
LH	639297	1,844

Multi Piece (3) - 4" Threshold  
48" x 36" x 80" - Handed by SEAT



**BENTON**

Seat	Item#	MSRP
RH	639301	\$1,629
LH	639289	1,629

Multi Piece (3) - 4" Threshold  
48" x 36" x 80" - Handed by SEAT



**COLLINWOOD**

Drain	Item#	MSRP
Center	711224	\$1,629

Multi Piece (4) - 3" Threshold  
48" x 36" x 78"

## STANDARD FEATURES

**ALL UNITS:** Low threshold, sturdy shower base with textured floor, double reinforced ArmorCore walls, accessory shelves, accommodates shower doors, simple installation from front or rear, easy to clean high gloss premium Acrylx finish, limited lifetime warranty. Made in the **USA**

- **Spencer:** Also includes 3 Stainless steel grab bars, stainless steel curtain rod and chrome plated brass drain.
- **Jackson:** Also includes 3 White grab bars, white curtain rod, & Chrome plated brass drain.
- **Collinwood, Doyle, & Benville:** Also includes a Chrome plated brass drain.



**DOYLE**

Drain	Item#	MSRP
RH	711228	\$1,629
LH	711216	1,629

Multi Piece (5) - 4" Threshold  
60" x 30" x 79" - Handed by DRAIN



**JACKSON**

Drain	Item#	MSRP
RH	639306	\$1,844
LH	639296	1,844

Multi Piece (5) - 4" Threshold  
60" x 30" x 79" - Handed by DRAIN



**Keller**

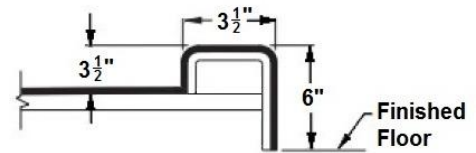
Seat	Item#	MSRP
RH	1295752	\$1,524
LH	1295751	1,524

One Piece - 3" Threshold  
60" x 34" x 80" - Handed by SEAT

# Age in Place – Low & Standard Threshold Showers

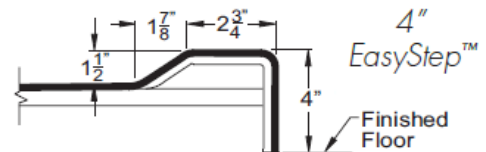
## STANDARD THRESHOLD

Laurel Mountain has recently added Standard Entry showers units to their offering. (See Below)



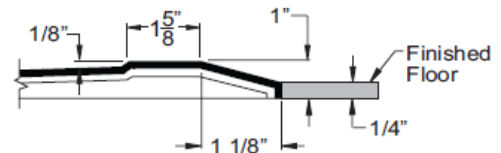
## LOW THRESHOLD SHOWERS

Laurel Mountain offers a variety of low threshold showers with a 3" or 4" thresholds. (Pages 1 & 2)



## BARRIER FREE / ZERO THRESHOLD SHOWERS

The Zero / Barrier Free showers from Laurel Mountain are the solution for walk-in and roll-in bathing. The showers have 1/2" – 1 1/8" threshold / curbs that bevel to 1/4". (Pages 4-10)



### STANDARD FEATURES

**ALL UNITS:** Sturdy shower base with textured floor, double ArmorCore reinforced walls, accessory shelves, 3 stainless steel grab bars, stainless steel curtain rod, chrome plated brass drain, accommodates shower doors, simple 1-piece installation, easy to clean high gloss premium Acrylx finish, limited lifetime warranty.

Made in the **USA**

- o **Amherst:** Also includes two seats.



**ASHLAND**



**DENDRON**



**AMHERST**

Seat	Item#	MSRP
LH	1295741	\$1,524
RH	1295742	1,524

**One Piece** - 6" Threshold  
60" x 36" x 76" - Handed by SEAT

Seat	Item#	MSRP
LH	1295747	\$1,524
RH	1295748	1,524

**One Piece** - 6" Threshold  
60" x 36" x 76" - Handed by SEAT

Drain	Item#	MSRP
Center	1295740	\$1,824

**Multi Piece (3)** - 6" Threshold  
60" x 34" x 72" - Handed by DRAIN

# Age in Place – Barrier Free / Zero Threshold Showers

**RIDGELY**



Drain	Item#	MSRP
Center	711223	\$1,995
<u>Multi Piece (5) - 3/4" Threshold</u>		
<u>60" x 30" x 78"</u>		

**RIDGELY II**



Drain	Item#	MSRP
Center	661464	\$2,285
<u>Multi Piece (5) - 3/4" Threshold</u>		
<u>60" x 30" x 78"</u>		

**RIDGELY III**



Drain	Item#	MSRP
Center	661474	\$2,990
<u>Multi Piece (5) - 3/4" Threshold</u>		
<u>60" x 30" x 78"</u>		

## STANDARD FEATURES

**ALL UNITS:** Barrier free, zero threshold, patented pre-leveled base w/ steel rod reinforcement, textured floor, double reinforced ArmorCore walls, collapsible dam, chrome plated brass drain, curtain rod & weighted curtain, 3 integral shelves, attractive, easy to clean high gloss premium Acrylx finish, simple installation from front or rear, limited lifetime warranty.

Made in the **USA**

- **Ridgely II & Jakeston II:** Includes 3 Stainless steel grab bars.
- **Ridgely III & Jakeston III:** Includes everything above and padded seat, mixing valve, hand shower, and slide bar.

**JAKESTON**



Drain	Item#	MSRP
RH	711239	\$1,995
LH	711227	1,995
<u>Multi Piece (5) - 1" Threshold</u>		
<u>60" x 30" x 78" - Handed by DRAIN</u>		

**JAKESTON II**



Drain	Item#	MSRP
RH	661473	\$2,285
LH	661470	2,285
<u>Multi Piece (5) - 1" Threshold</u>		
<u>60" x 30" x 78" - Handed by DRAIN</u>		

**JAKESTON III**



Drain	Item#	MSRP
RH	661466	\$2,990
LH	661463	2,990
<u>Multi Piece (5) - 1" Threshold</u>		
<u>60" x 30" x 78" - Handed by DRAIN</u>		

# Age in Place - Barrier Free / Zero Threshold Showers

**SARDIS**



Drain	Item#	MSRP
Center	711218	\$2,065
<u>Multi Piece (5) - 3/4" Threshold</u>		
<u>60" x 33" x 78"</u>		

**SARDIS II**



Drain	Item#	MSRP
Center	661467	\$2,355
<u>Multi Piece (5) - 3/4" Threshold</u>		
<u>60" x 33" x 78"</u>		

**SARDIS III**



Drain	Item#	MSRP
Center	661459	\$3,060
<u>Multi Piece (5) - 3/4" Threshold</u>		
<u>60" x 33" x 78"</u>		

## STANDARD FEATURES

**ALL UNITS:** Barrier free, Zero threshold, patented pre-leveled base with steel rod reinforcement, textured floor, double reinforced ArmoreCore walls, collapsible dam, chrome plated brass drain, curtain rod w/ weighted curtain, 3 integral shelves, attractive, easy to clean high gloss premium Acrylx finish, simple installation from front or rear, limited lifetime warranty.

Made in the **USA**

- **Sardis II & Williston II:** Includes 3 Stainless steel grab bars.
- **Sardis III & Williston III:** Includes everything above and padded seat, mixing valve, hand shower, and slide bar.

**WILLISTON**



Drain	Item#	MSRP
RH	711234	\$2,065
LH	711237	2,065
<u>Multi Piece (5) - 1" Threshold</u>		
<u>60" x 33" x 78" - Handed by DRAIN</u>		

**WILLISTON II**



Drain	Item#	MSRP
RH	661460	\$2,355
LH	661465	2,355
<u>Multi Piece (5) - 1" Threshold</u>		
<u>60" x 33" x 78" - Handed by DRAIN</u>		

**WILLISTON III**



Drain	Item#	MSRP
RH	661471	\$3,060
LH	661475	3,060
<u>Multi Piece (5) - 1" Threshold</u>		
<u>60" x 33" x 78" - Handed by DRAIN</u>		

# Age in Place - Barrier Free / Zero Threshold Showers

**ERWIN**



Drain	Item#	MSRP
Center	711219	\$2,135
<u>Multi Piece (5) - 7/8" Threshold</u>		
<u>60" x 36" x 78"</u>		

**ERWIN II**



Drain	Item#	MSRP
Center	725748	\$2,425
<u>Multi Piece (5) - 7/8" Threshold</u>		
<u>60" x 36" x 78"</u>		

**ERWIN III**



Drain	Item#	MSRP
Center	725752	\$3,130
<u>Multi Piece (5) - 7/8" Threshold</u>		
<u>60" x 36" x 78"</u>		

## STANDARD FEATURES

**ALL UNITS:** Barrier free, Zero threshold, patented pre-leveled base with steel rod reinforcement, textured floor, double reinforced ArmorCore walls, collapsible dam, chrome plated brass drain, curtain rod w/ weighted curtain, 3 integral shelves, attractive, easy to clean high gloss premium Acrylx finish, simple installation from front or rear, limited lifetime warranty.

Made in the **USA**

- **Erwin II & Gleason II:** Includes 3 Stainless steel grab bars.
- **Erwin III & Gleason III:** Includes everything above and padded seat, mixing valve, hand shower, and slide bar.

**GLEASON**



Drain	Item#	MSRP
RH	711240	\$2,135
LH	711229	2,135
<u>Multi Piece (5) - 1" Threshold</u>		
<u>60" x 36" x 78" - Handed by DRAIN</u>		

**GLEASON II**



Drain	Item#	MSRP
RH	661468	\$2,425
LH	661472	2,425
<u>Multi Piece (5) - 1" Threshold</u>		
<u>60" x 36" x 78" - Handed by DRAIN</u>		

**GLEASON III**



Drain	Item#	MSRP
RH	661461	\$3,130
LH	661534	3,130
<u>Multi Piece (5) - 1" Threshold</u>		
<u>60" x 36" x 78" - Handed by DRAIN</u>		

# Age in Place - Barrier Free / Zero Threshold Showers

**SAULSBURY**



Drain	Item#	MSRP
Center	711225	\$2,580
*Roll In Unit*		
<u>Multi Piece (5) - 1 1/8" Threshold</u>		
<u>60" x 48" x 78"</u>		

**DANRIDGE**



Drain	Item#	MSRP
Center	711235	\$2,155
<u>Multi Piece (5) - 1" Threshold</u>		
<u>50" x 50" x 78"</u>		

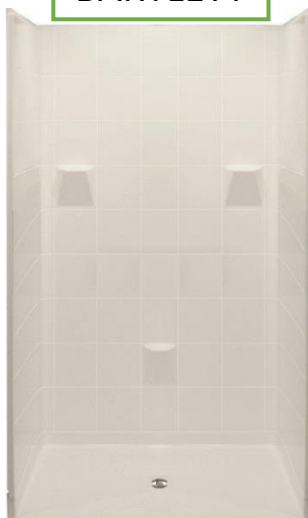
## STANDARD FEATURES

**ALL UNITS:** Barrier free, Zero threshold, patented pre-leveled base with steel rod reinforcement, textured floor, double reinforced ArmorCore walls, collapsible dam, chrome plated brass drain, curtain rod w/ weighted curtain, integral shelf/shelves, attractive, easy to clean high gloss premium Acrylx finish, simple installation from front or rear, limited lifetime warranty.

Made in the **USA**

- o **Bartlett II:** Includes 3 Stainless steel grab bars.
- o **Bartlett III:** All standard features & Bartlett II features, plus a padded seat, mixing valve, hand shower w/ slide bar.

**BARTLETT**



Drain	Item#	MSRP
Center	711232	\$1,825
<u>Multi Piece (4) - 7/8" Threshold</u>		
<u>48" x 36" x 78"</u>		

**BARTLETT II**



Drain	Item#	MSRP
Center	725751	\$2,115
<u>Multi Piece (4) - 7/8" Threshold</u>		
<u>48" x 36" x 78"</u>		

**BARTLETT III**



Drain	Item#	MSRP
Center	725753	\$2,820
<u>Multi Piece (4) - 7/8" Threshold</u>		
<u>48" x 36" x 78"</u>		

# Age in Place - Barrier Free / Zero Threshold Showers

**HARRIMAN I**



Drain	Item#	MSRP
RH	711231	\$1,995
LH	711220	1,995

RH 711231 \$1,995  
LH 711220 1,995

Multi Piece (5) - 1" Threshold

54" x 30" x 78" - Handed by DRAIN

**HARRIMAN II**



Drain	Item#	MSRP
RH	1362523	\$2285
LH	1362522	\$2285

RH 1362523 \$2285  
LH 1362522 \$2285

Multi Piece (5) - 1" Threshold

54" x 30" x 78" - Handed by DRAIN

**HARRIMAN III**



Drain	Item#	MSRP
RH	1362519	\$2990
LH	1362525	\$2990

RH 1362519 \$2990  
LH 1362525 \$2990

Multi Piece (5) - 1" Threshold

54" x 30" x 78" - Handed by DRAIN

## STANDARD FEATURES

**ALL UNITS:** Barrier free, Zero threshold, patented pre-leveled base with steel rod reinforcement, textured floor, double reinforced ArmorCore walls, collapsible dam, chrome plated brass drain, curtain rod w/ weighted curtain, 3 integral shelves, attractive, easy to clean high gloss premium Acrylx finish, simple installation from front or rear, limited lifetime warranty. Made in the **USA**

- **Harriman II & Obion II:** Includes 3 Stainless steel grab bars.
- **Harriman III & Obion III:** Includes everything above and padded seat, mixing valve, hand shower, and slide bar.

**OBION I**



Drain	Item#	MSRP
RH	711238	\$2,135
LH	711222	\$2,135

RH 711238 \$2,135  
LH 711222 \$2,135

Multi Piece (5) - 1" Threshold

54" x 36" x 78" - Handed by DRAIN

**OBION II**



Drain	Item#	MSRP
RH	1362526	\$2425
LH	1362521	\$2425

RH 1362526 \$2425  
LH 1362521 \$2425

Multi Piece (5) - 1" Threshold

54" x 36" x 78" - Handed by DRAIN

**OBION III**



Drain	Item#	MSRP
RH	1362524	\$3130
LH	1362520	\$3130

RH 1362524 \$3130  
LH 1362520 \$3130

Multi Piece (5) - 1" Threshold

54" x 36" x 78" - Handed by DRAIN



# Age in Place – Barrier Free / Roll In Showers



## ← WHITWELL

Seat	Item#	MSRP
RH	639294	\$2,335
LH	639304	2,335

One Piece - 3/4" Threshold  
62" x 33" x 79" - Handed by SEAT



## VANLEER →

Seat	Item#	MSRP
RH	639292	\$2,395
LH	639302	2,395

One Piece - 3/4" Threshold  
63" x 34" x 79" - Handed by SEAT

### STANDARD FEATURES

**ALL UNITS:** Barrier free, Zero threshold, roll in shower, steel rod reinforced base with textured floor, double reinforced ArmorCore walls, curtain rod, premium weighted shower curtain, chrome plated brass drain, collapsible dam, limited lifetime warranty.

Made in the **USA**

- **Cowan:** Includes three white grab bars & integral shelves, high gloss tile pattern, gelcoat/fiberglass construction.
- **Whitwell:** Includes a fold up seat, two stainless steel grab bars, two integral shelves, smooth high gloss finish, premium gelcoat/fiberglass construction, meets ADA Standards.
- **Vanleer:** Includes a fold up seat, two white grab bars, high gloss finish, meets ADA standards, gelcoat/fiberglass.
- **Toone:** Includes a fold up seat, two stainless steel grab bars, high gloss finish, meets ADA standards, AcrylX finish / fiberglass construction.



## ← TOONE

Seat	Item#	MSRP
Right	639313	\$3,310
Left	639310	3,310

One Piece - 7/8" Threshold  
64" x 30" x 82" - Handed by Seat



## COWAN →

Drain	Item#	MSRP
Right	639311	\$1,983
Left	639314	1,983

Multi Piece (5) - 1" Threshold  
60" x 31" x 78" – Handed by DRAIN

# Age in Place - Barrier Free / Transfer Showers



## HUNTLAND

Valve	Item#	MSRP
RH	639303	\$2,655
LH	639293	2,655

**Multi Piece (3)**  
5/8" Threshold  
40" x 38" x 78"  
 Handed by VALVE

## PARSON

Valve	Item#	MSRP
RH	639295	\$2,350
LH	639305	2,350

**One Piece**  
5/8" Threshold  
39" x 39" x 77"  
 Handed by VALVE



### STANDARD FEATURES

**ALL UNITS:** Barrier free, zero threshold, transfer shower, fold up seat, steel rod reinforced base with textured floor, double reinforced ArmorCore walls, curtain rod, premium weighted shower curtain, chrome plated brass drain, collapsible dam, meets ADA standards, limited lifetime warranty.

Made in the **USA**

- o **Huntland & Parson:** Includes two stainless steel grab bars, high gloss smooth finish, AcrylX finish / fiberglass construction.

### ADA SHOWERS - ROLL IN & TRANSFER

#### Roll In Showers (minimum 60" x 30" inside dimension)

ADA Roll in Showers are wheel chair accessible. They provide lots of room, making it easier to maneuver in a wheelchair.

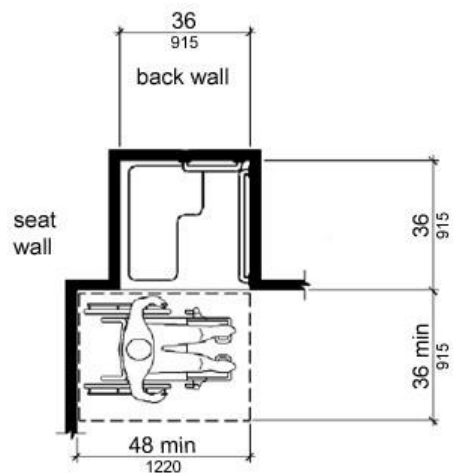
Some jurisdictions specify an ADA compliant handicapped accessible shower with a minimum 60"x36" inside dimension so that the caregivers can easily assist.

#### ADA Transfer Showers (minimum 36" x 36" inside dimension)

ADA Transfer Shower are designed so the user can transfer onto a fold down shower bench from a wheelchair parked outside the shower unit.

To comply with ADA requirements ADA Transfer Showers must be properly accessorized.

The following diagram illustrates the 48" clear floor space to transfer from a wheelchair to the shower seat. ADA transfer showers can be ordered with a recessed receiver flange on the seat side to accommodate a parallel wall.



# Age in Place – One Piece & Multi-Piece Tub Showers

**CHERITON**



Drain	Item#	MSRP
RH	1295744	\$1,705
LH	1295743	1,705

One Piece

60" x 32" x 78" - Handed by DRAIN

**LURAY**



Drain	Item#	MSRP
RH	1295754	\$1,751
LH	1295753	1,751

One Piece

60" x 32" x 80" - Handed by DRAIN

**PHENIX**



Drain	Item#	MSRP
RH	1295760	\$1,797
LH	1295759	1,797

One Piece

60" x 32" x 76" - Handed by DRAIN

## STANDARD FEATURES

**ALL UNITS:** Double reinforced ArmorCore walls, three stainless steel grab bars, steel curtain rod, limited lifetime warranty.

Made in the **USA**

**PEMBROKE**



Drain	Item#	MSRP
RH	1295758	\$1,458
LH	1295757	1,458

One Piece

60" x 30" x 72"

Handed by DRAIN

**STUART**



Drain	Item#	MSRP
RH	1295762	\$1,535
LH	1295761	1,535

One Piece

60" x 30" x 72"

Handed by DRAIN

**DUFFIELD**



Drain	Item#	MSRP
RH	1295750	\$1,825
LH	1295749	1,825

Multi-Piece (3)

60" x 30" x 72"

Handed by DRAIN

**PARKSLEY**



Drain	Item#	MSRP
RH	1295756	\$1,748
LH	1295755	1,748

Multi-Piece (3)

60" x 30" x 72"

Handed by DRAIN



# Age in Place – Showers

## Quick Reference Guide



Length	Width	Model	Drain Location	Standard Entry	Low Entry	Zero Entry	Tub & Shower	Grab Bars	Bars & Seat	Transfer Shower	Roll In	Page
39	39	Parson	Center			X		X	X	X		10
40	38	Huntland	Center			X		X	X	X		10
48	36	Bartlett, II, III	Center			X		X	X	X		7
48	36	Spencer	Center		X			X	X			2
48	36	Benton	Center		X							2
48	36	Collinwood	Center		X							2
54	30	Harriman, II, III	L/R			X		X	X			7
54	36	Obion, II, III	L/R			X		X	X			7
60	30	Almedia	L/R		X			X	X			1
60	30	Jackson	L/R		X			X				1
60	30	Ridgely, II, III	Center			X		X	X	X	X	3
60	30	Jakeston, II, III	L/R			X		X	X	X	X	3
60	30	Phenix	L/R				X	X				11
60	30	Stuart	L/R				X	X				11
60	30	Duffield	L/R				X	X				11
60	30	Parksley	L/R				X	X				11
60	30	Pembroke	L/R				X	X				11
60	31	Ramer	L/R		X			X	X			1
60	31	Cowan	L/R			X		X			X	9
60	31	Slayden	L/R		X							1
60	32	Loudon	L/R		X			X	X			1
60	32	Atwood	L/R		X							1
60	32	Cheriton	L/R				X	X				1
60	32	Luray	L/R				X	X				1
60	33	Doyle	L/R		X							2
60	34	Coeburn	L/R		X			X	X			1
60	34	Keller	Center		X			X	X			3
60	34	Amherst	Center	X				X	X			3
60	33	Sardis, II, III	Center			X		X	X	X	X	4
60	33	Williston, II, III	L/R			X		X	X	X	X	4
60	36	Erwin, II, III	Center			X		X	X	X	X	5
60	36	Gleason, II, III	L/R			X		X	X	X	X	5
60	36	Ashland	Center	X				X	X			3
60	36	Dendron	L/R	X				X	X			3
62	33	Whitwell	Center			X		X	X		X	9
63	34	Vanleer	Center			X		X	X		X	9
64	30	Toone	Center			X		X	X		X	9

**Contact a Certified Aging in Place Specialist!**

1-800-930-0050 or [info@lmbath.com](mailto:info@lmbath.com)

Available 6:00am – 6:00pm EST

July, 2019